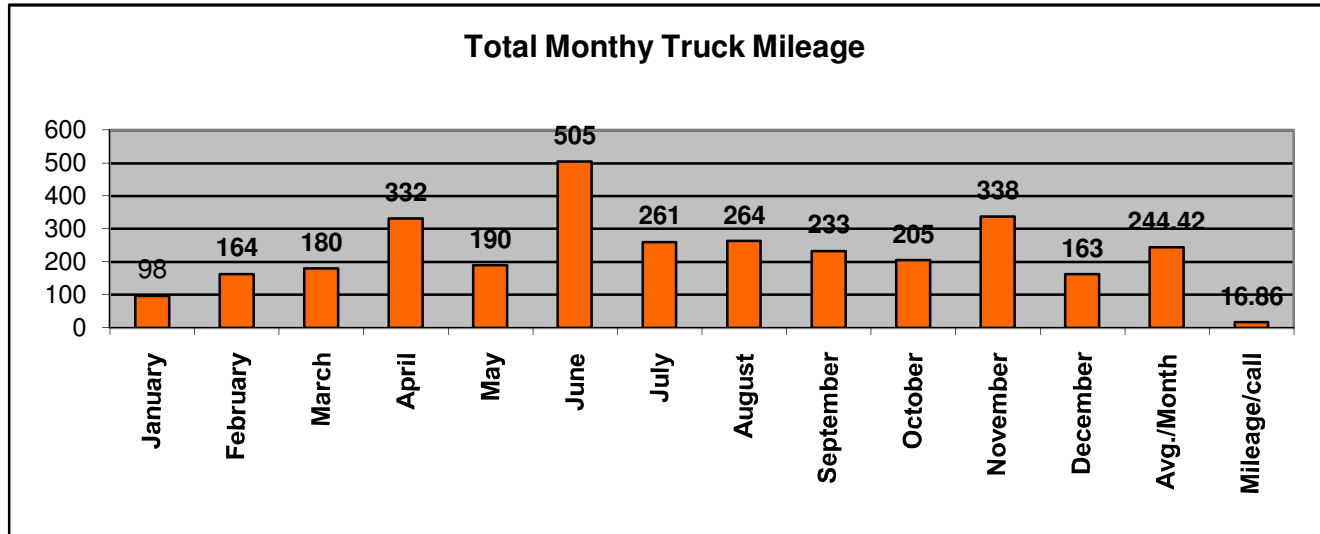
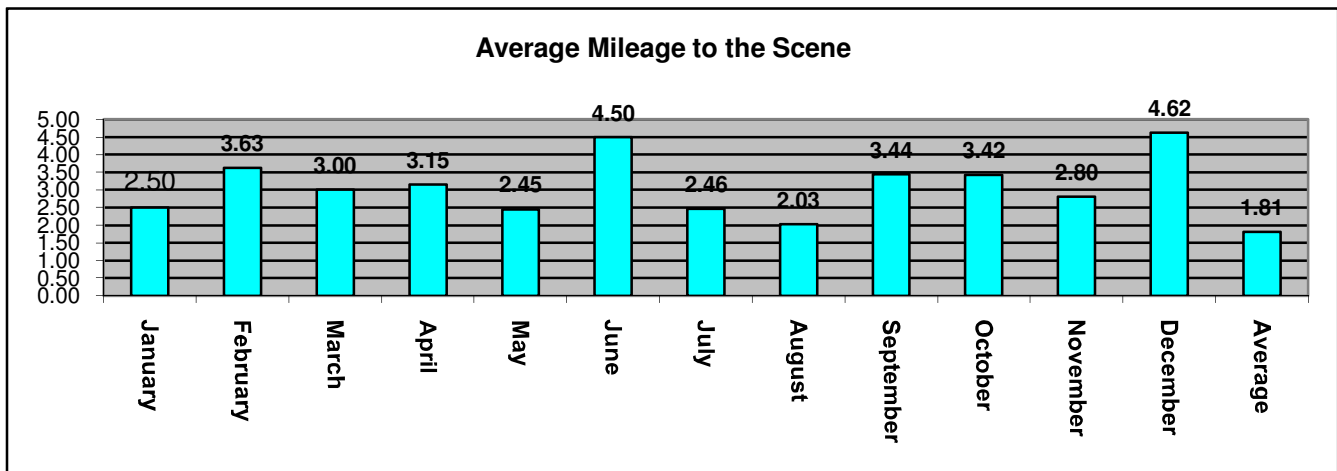


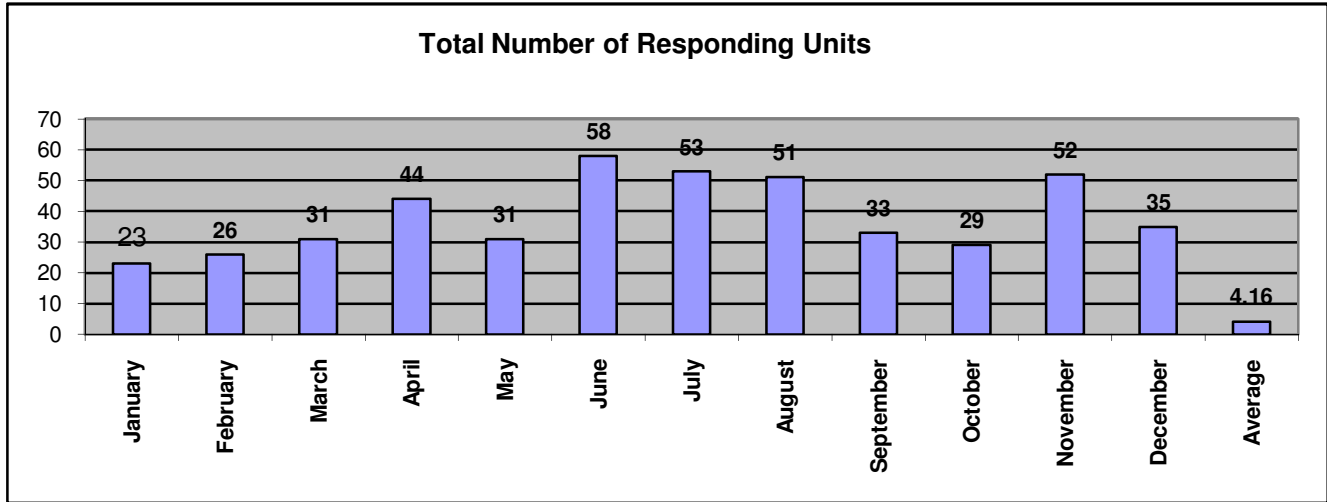
Monthly Mileage	
January	98
February	164
March	180
April	332
May	190
June	505
July	261
August	264
September	233
October	205
November	338
December	163
Avg./Month	244.42
Mileage/call	16.86
<b>Total YTD</b>	<b>2933</b>



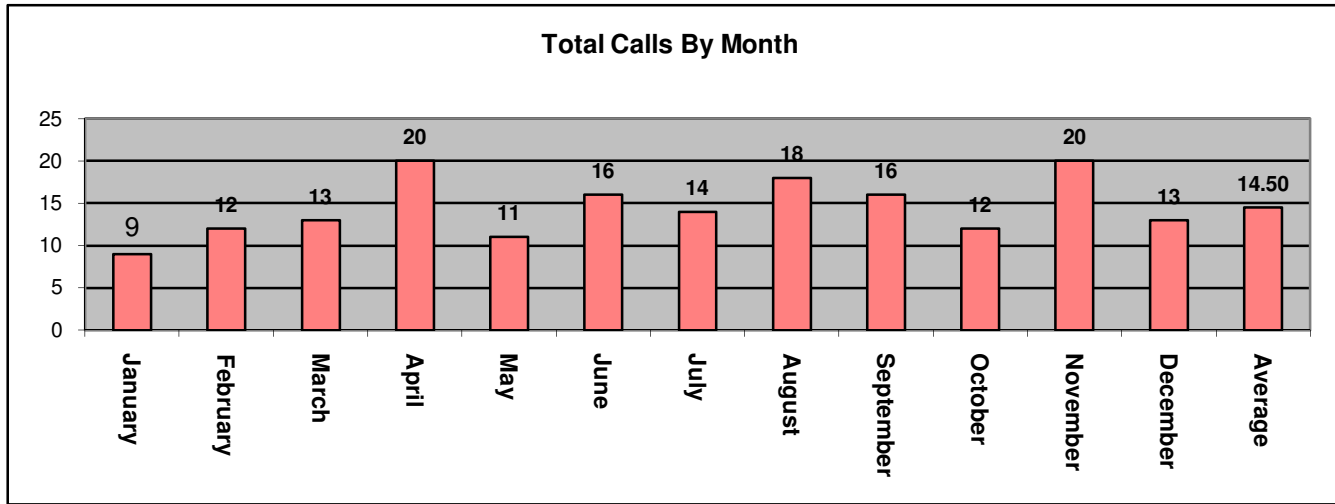
Avg. Mileage to Scene	
January	2.50
February	3.63
March	3.00
April	3.15
May	2.45
June	4.50
July	2.46
August	2.03
September	3.44
October	3.42
November	2.80
December	4.62
Average	1.81



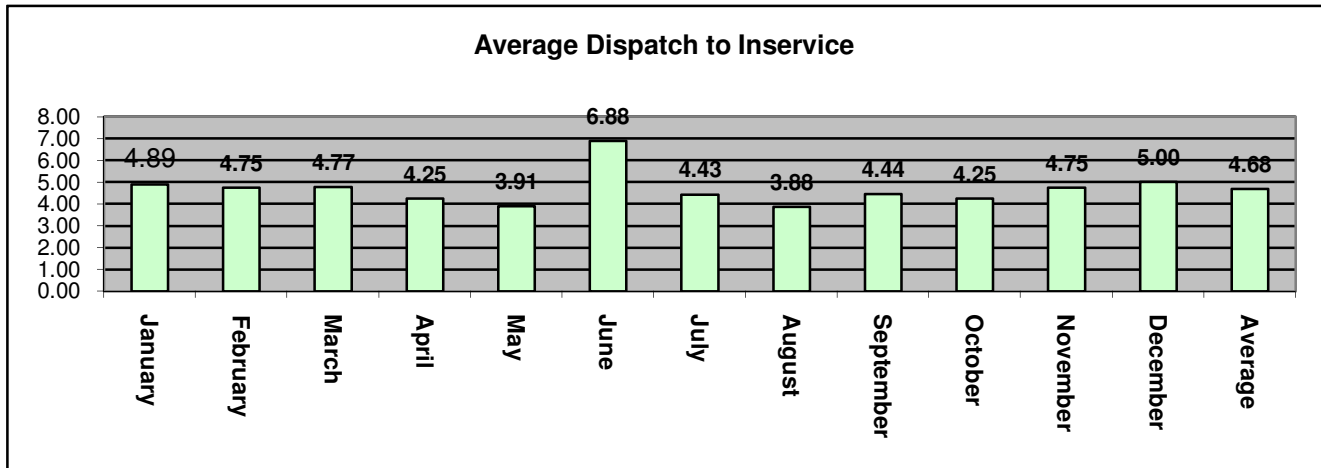
# Units in Service	
January	23
February	26
March	31
April	44
May	31
June	58
July	53
August	51
September	33
October	29
November	52
December	35
Average	4.16
Total YTD	466



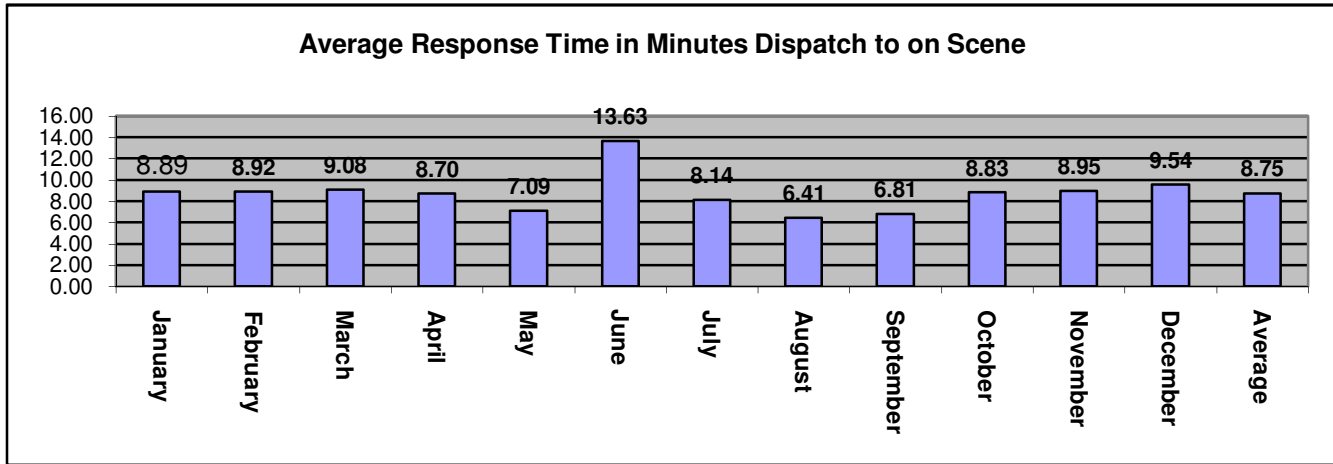
Total Calls By Month	
January	9
February	12
March	13
April	20
May	11
June	16
July	14
August	18
September	16
October	12
November	20
December	13
Average	14.50
Total YTD	174



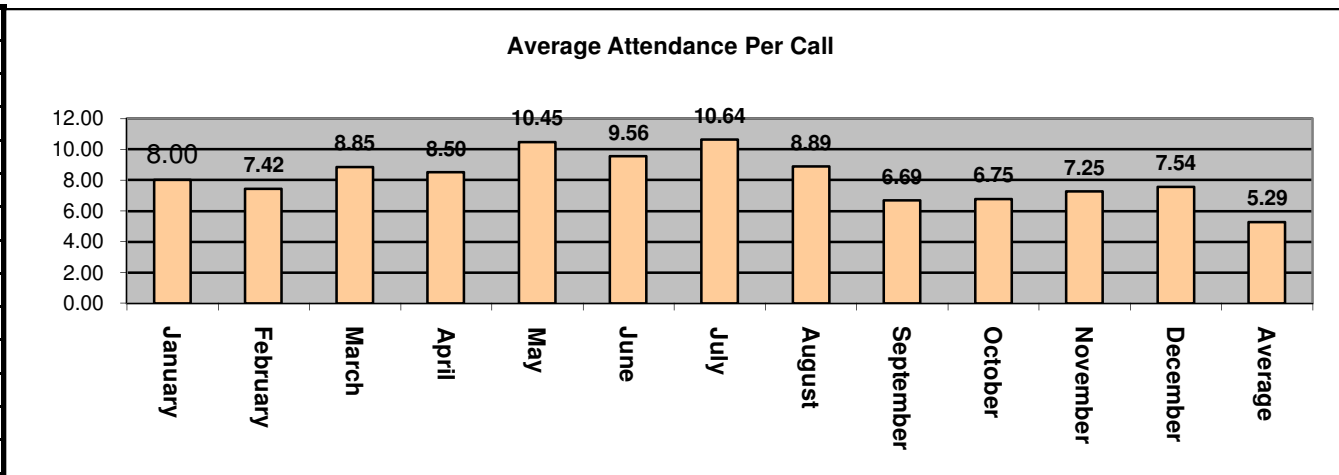
Avg. In Service Time	in Min
January	4.89
February	4.75
March	4.77
April	4.25
May	3.91
June	6.88
July	4.43
August	3.88
September	4.44
October	4.25
November	4.75
December	5.00
Average	4.68



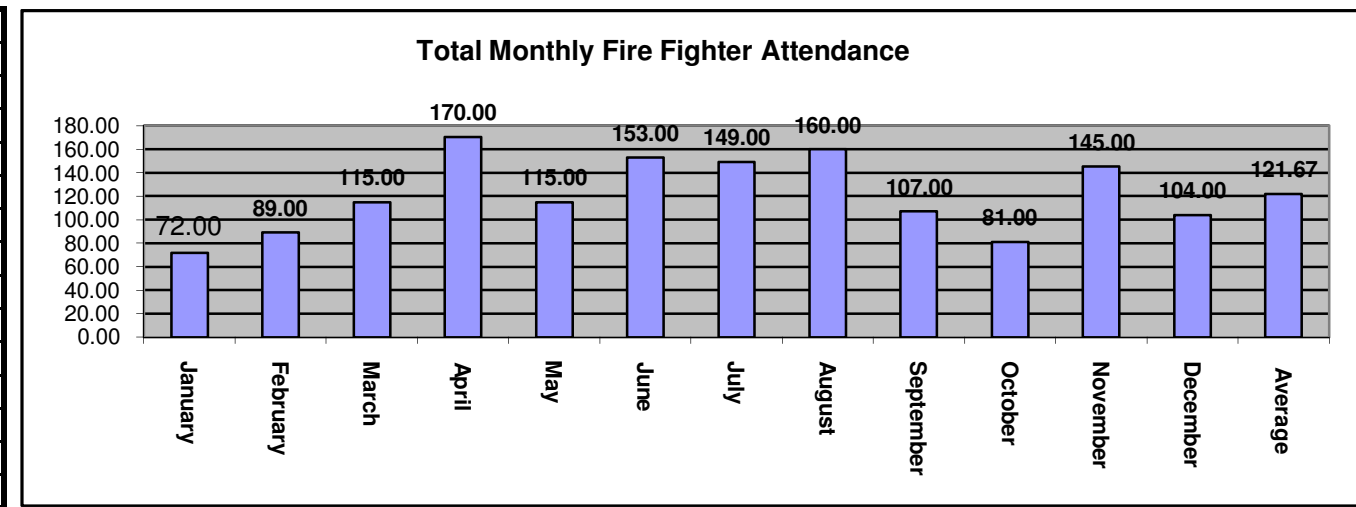
Avg. Response Time	in Min
January	8.89
February	8.92
March	9.08
April	8.70
May	7.09
June	13.63
July	8.14
August	6.41
September	6.81
October	8.83
November	8.95
December	9.54
Average	8.75



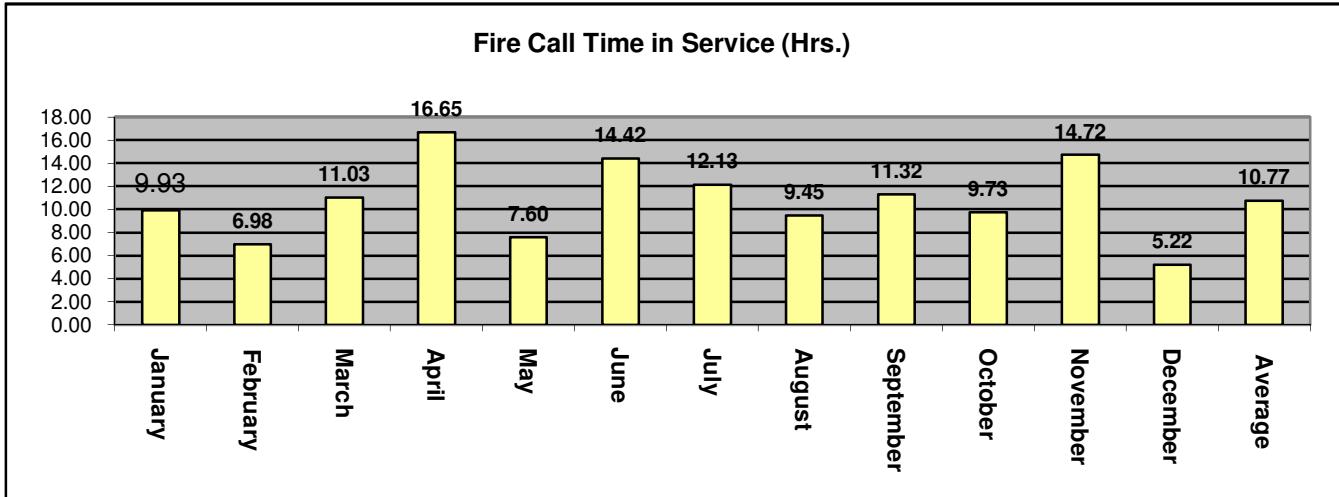
Average Attendance	
January	8.00
February	7.42
March	8.85
April	8.50
May	10.45
June	9.56
July	10.64
August	8.89
September	6.69
October	6.75
November	7.25
December	7.54
Average	5.29

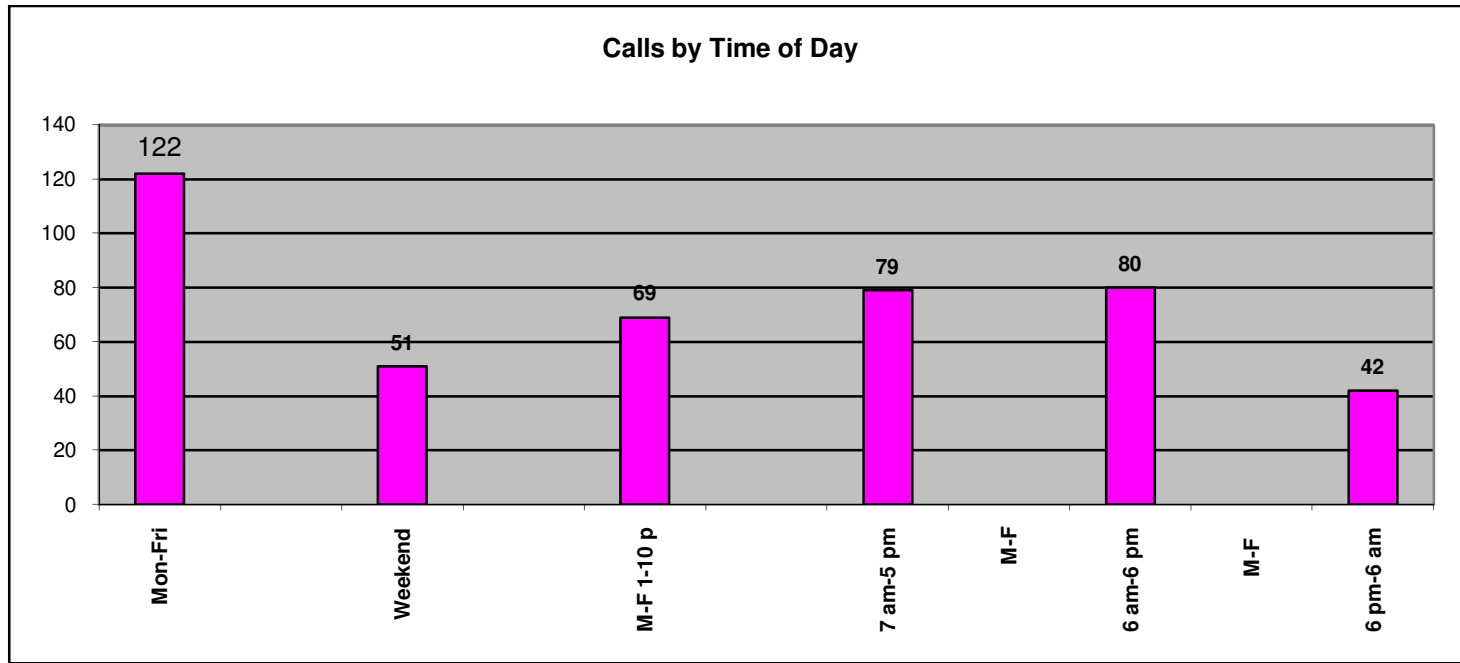


Total FF Attendance	
January	72.00
February	89.00
March	115.00
April	170.00
May	115.00
June	153.00
July	149.00
August	160.00
September	107.00
October	81.00
November	145.00
December	104.00
Average	121.67
Total YTD	1356.00

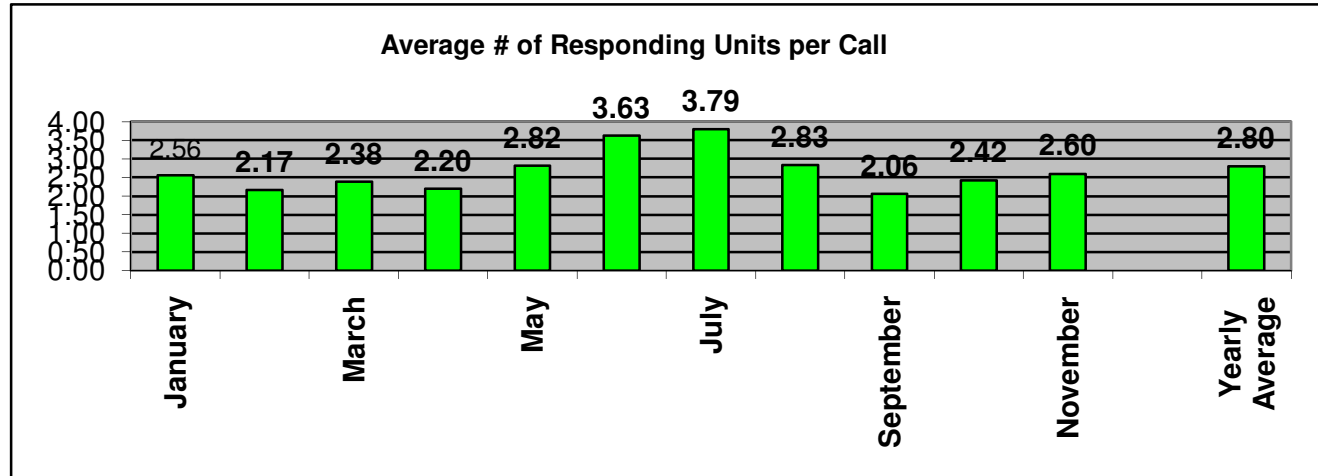


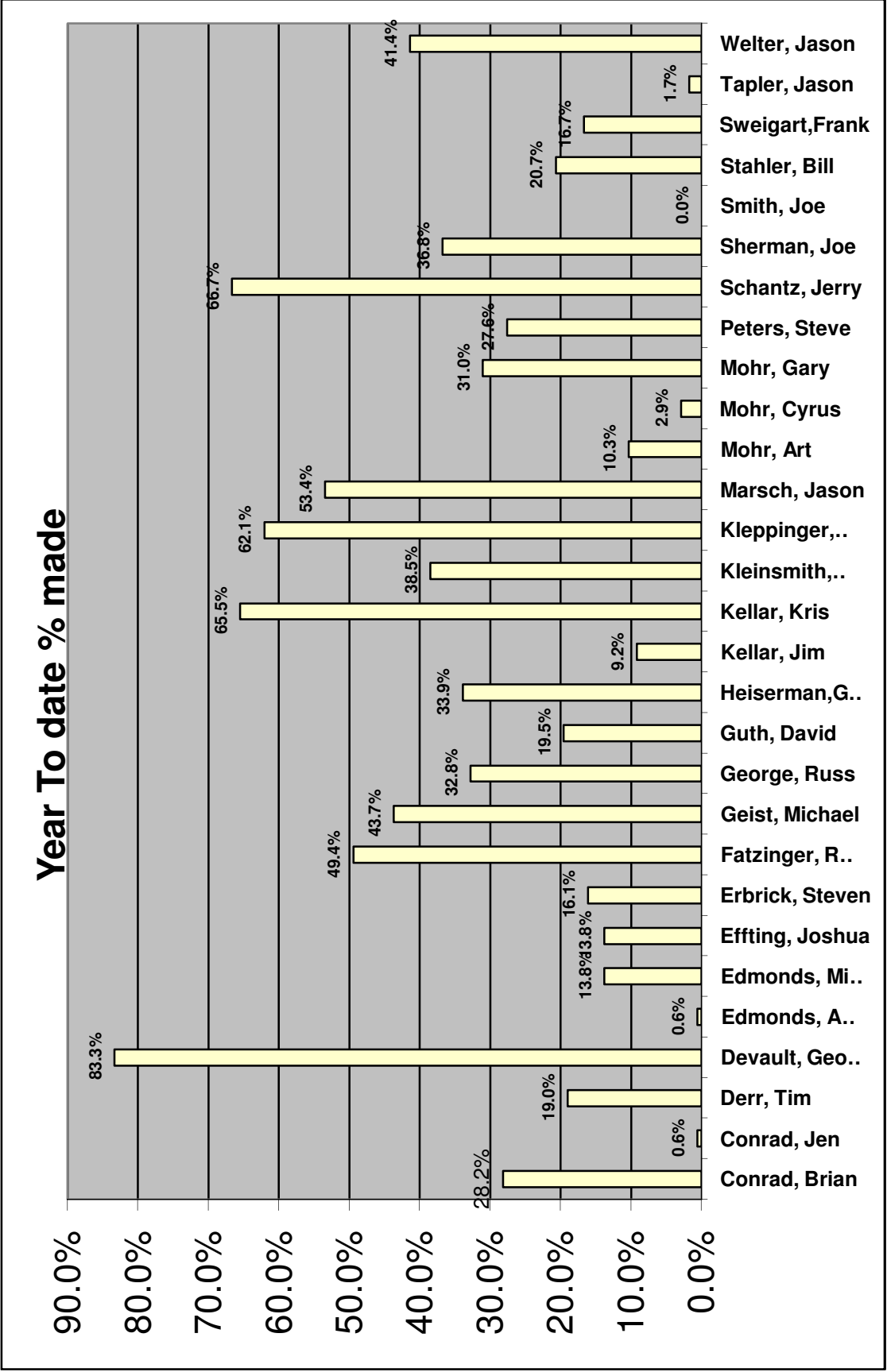
Time in Service (Hrs.)	
January	9.93
February	6.98
March	11.03
April	16.65
May	7.60
June	14.42
July	12.13
August	9.45
September	11.32
October	9.73
November	14.72
December	5.22
Average	10.77
Total YTD	123.97



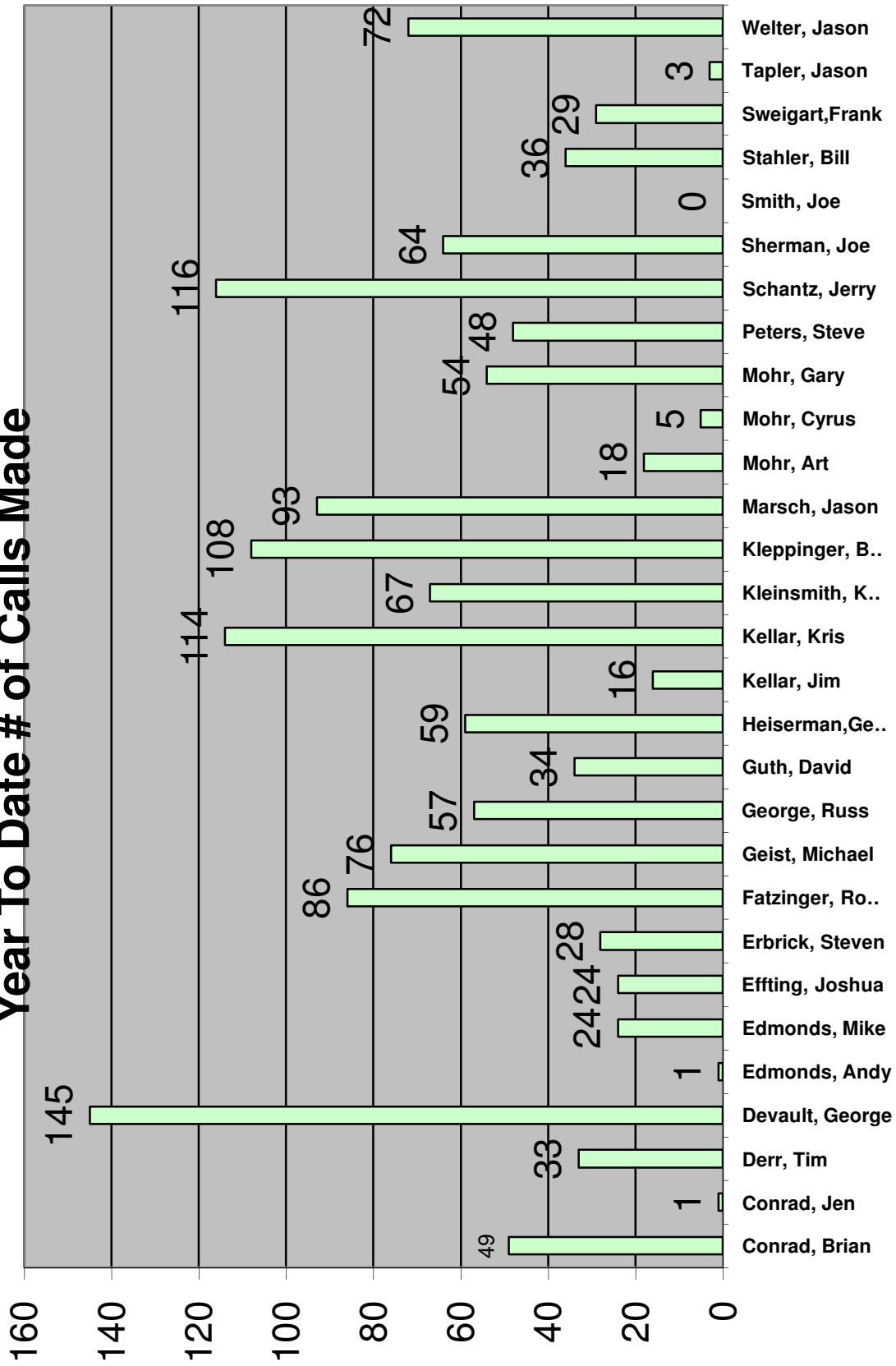


Average # Units/Call	
January	2.56
February	2.17
March	2.38
April	2.20
May	2.82
June	3.63
July	3.79
August	2.83
September	2.06
October	2.42
November	2.60
December	
Yearly Average	2.80

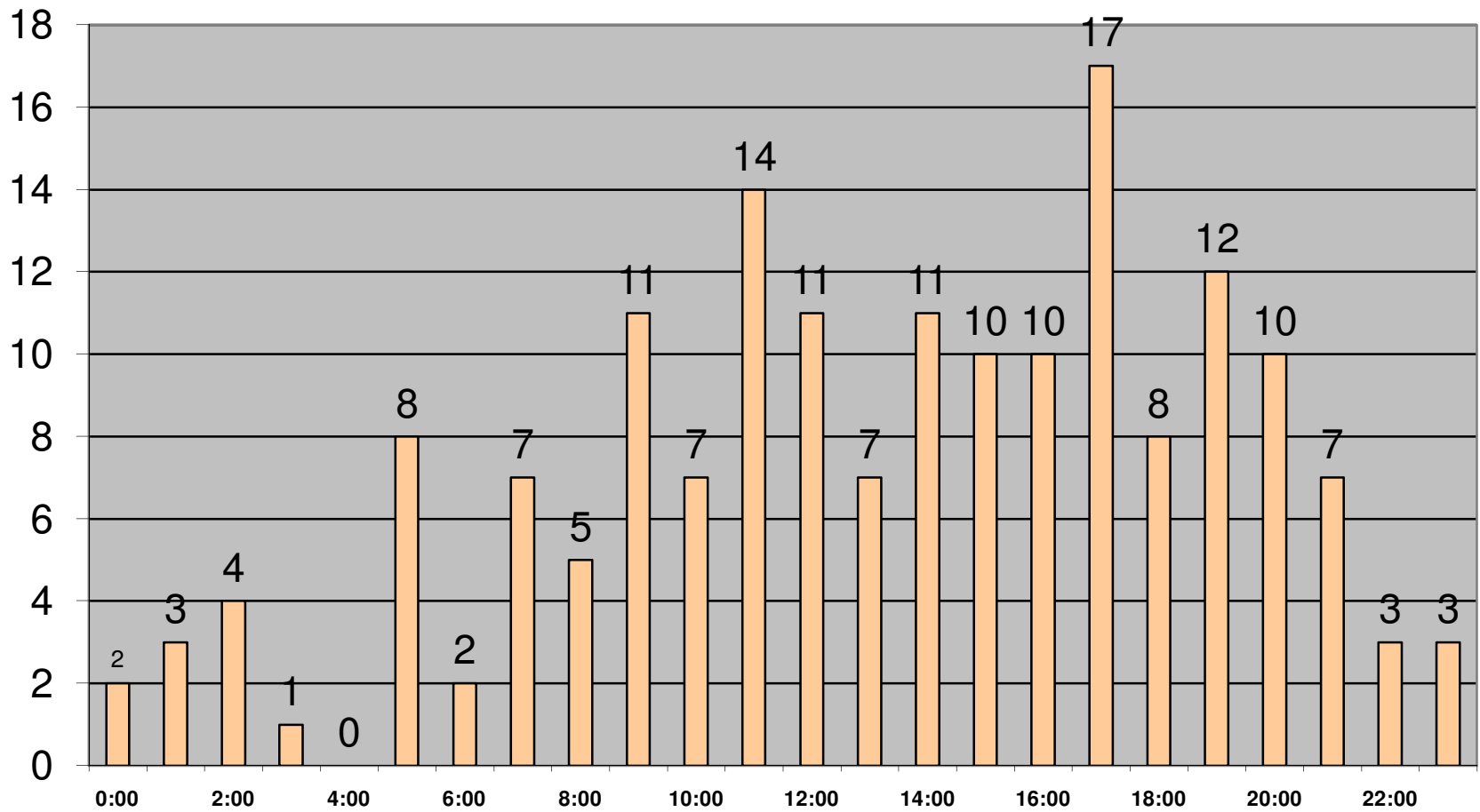


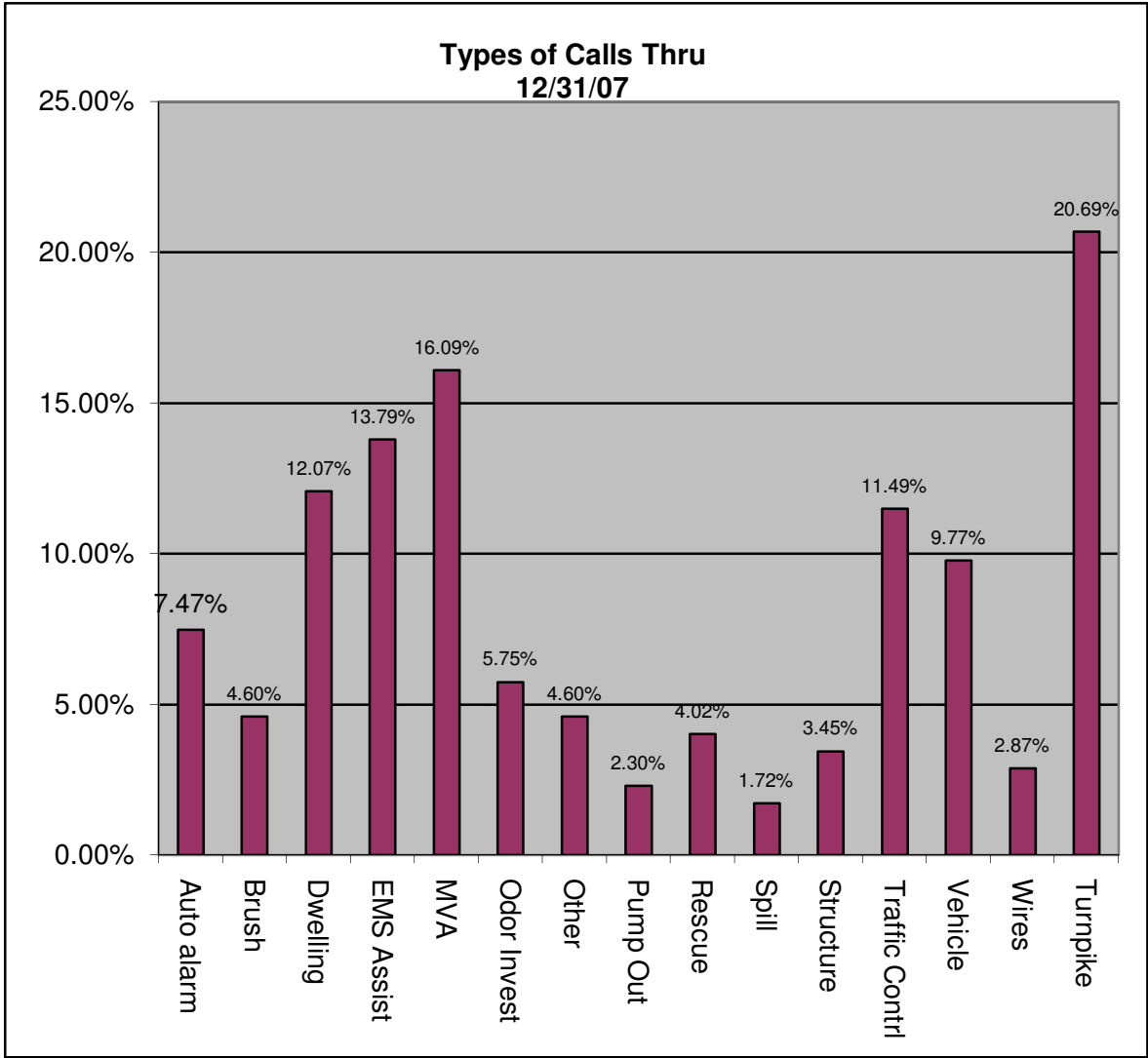


# Year To Date # of Calls Made



# # of calls by time of day





Types of Calls		
Auto alm	13	7.47%
Brush	8	4.60%
Dwelling	21	12.07%
EMS Ass	24	13.79%
MVA	28	16.09%
Odor Inv	10	5.75%
Other	8	4.60%
Pump Ou	4	2.30%
Rescue	7	4.02%
Spill	3	1.72%
Structure	6	3.45%
Fire Polic	20	11.49%
Vehicle	17	9.77%
Wires	5	2.87%
Turnpike	36	20.69%
<b>Total Calls</b>	<b>174</b>	
Mutual Aid		
Rec'd	23	13.22%
Given	47	27.01%

